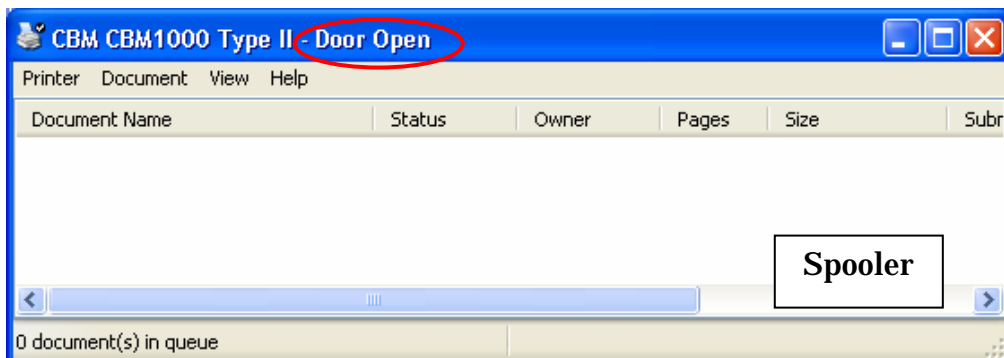
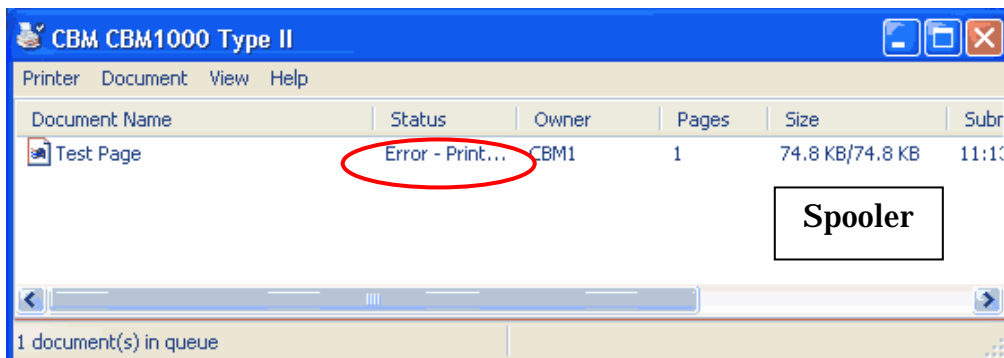
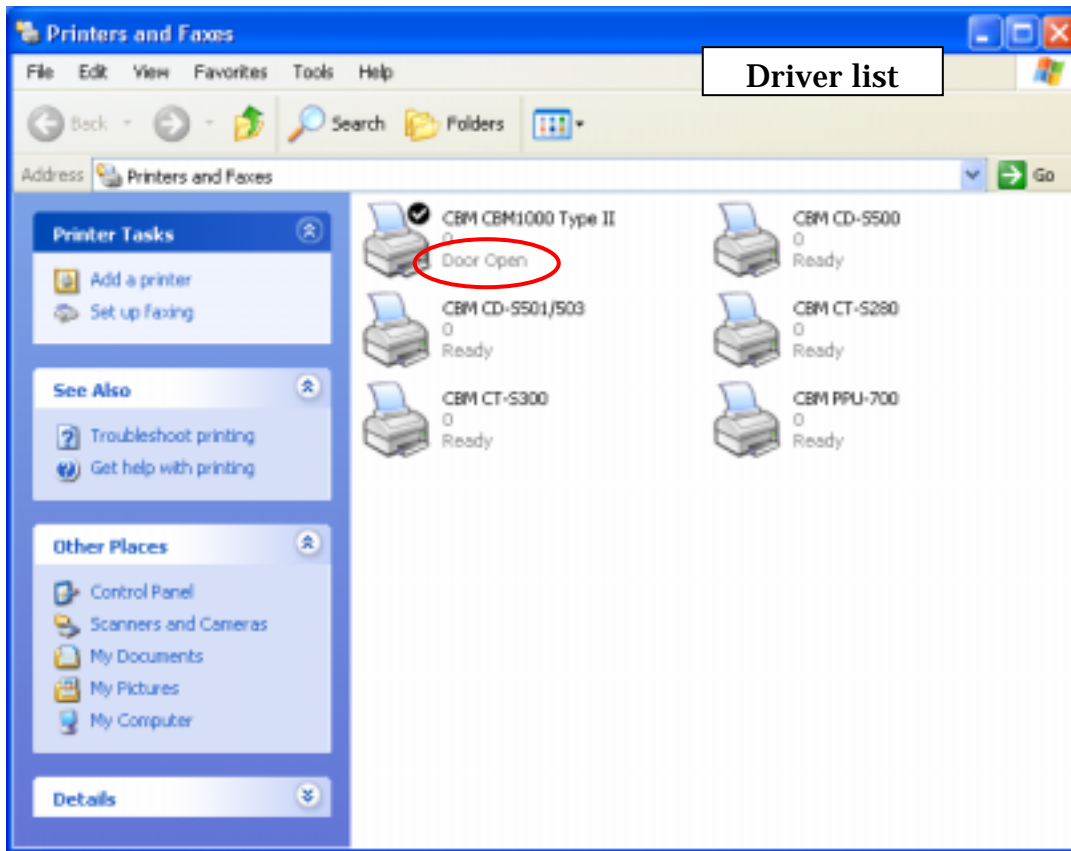


### Status information shown on Windows

If you use Windows driver with Language monitor, following status information is shown.  
(Only Serial / Parallel are officially supported.)



### CBM1000 / CT-S280 / CT-S300 / PPU-700

<u>Condition</u>	<u>Status shown</u>
Normal	Ready
Cover open	Door Open
PNE	Paper Problem
PE	Out of Paper
PE+PNE	Out of Paper – Paper Problem
Cutter error	User Intervention Required
Power OFF	Offline (USB only)

### CD-S500

<u>Condition</u>	<u>Status shown</u>
Normal	Ready
Cover open	User Intervention Required - Cover Open
PNE	Paper Problem
PE	Out of Paper - User Intervention Required
PE+PNE	Out of Paper – Paper Problem - User Intervention Required
Cover open	User Intervention Required
Power OFF	Offline(USB only)

### Remarks

Printer does not send status data to the host before receiving first printer data after power on.

As power off cannot be detected, if the power of printer is turned off after receiving status data and host cannot get any updated data, the last status data is kept.

Also even if cutter error is detected and error condition is cleared, the error status showed cannot be changed till printing next data.

To get status information on the application software, please refer to the information on following site.

<http://support.microsoft.com/default.aspx?scid=kb:en-us:202480>

The meaning of error is as follows..

<b>Value</b>	<b>Meaning</b>	<b>Status Message</b>
PRINTER_STATUS_DOOR_OPEN	Cover is open.	Door Open
PRINTER_STATUS_ERROR	Printer or print job is in error status.	Error
PRINTER_STATUS_PAPER_OUT	No paper	Out of Paper
PRINTER_STATUS_PAPER_PROBLEM	Paper near end or label/black mark paper detection error	Paper Problem
PRINTER_STATUS_WAITING	Auto recoverable error or pressing FEED button.	User Intervention Required
PRINTER_STATUS_USER_INTERVENTION	The error user need to clear	User Intervention Required